

# Model: VB6

## Vertical Blade Wind Driven Rain Resistant Louver

### APPLICATION:

VB6 was specifically designed to resist water penetration from wind driven rain.

### STANDARD SPECIFICATIONS:

**Frame:** 6063-T5 alloy .081" extruded aluminum

**Blade:** 6063-T5 alloy .081" extruded aluminum serpentine water control style

**Birdscreen:** Standard .0516" x .75" flattened expanded aluminum

**Finish:** Mill finished aluminum

### MINIMUM SIZE:

12" W x 12" H

### MAXIMUM SIZE:

Single Section Size 120" W x 120" H

-Can't Exceed 40 sq-ft for single section

Unlimited Width x 120" H Multi-Section

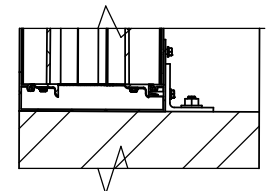
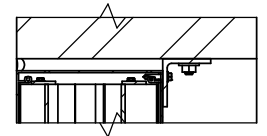
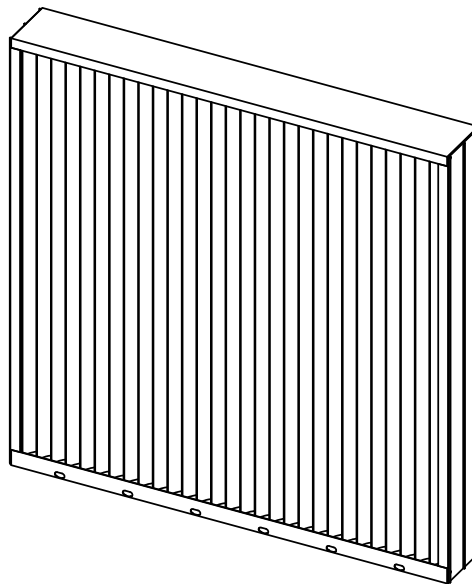
### OPTIONS: (At additional cost)

**Screens:** Removable Insect Screen  
Removable Birdscreen

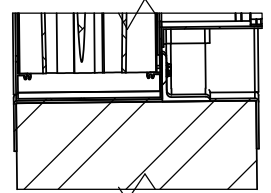
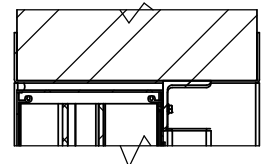
**Finishes:** Consult Factory

**Approved Wedge Anchors**

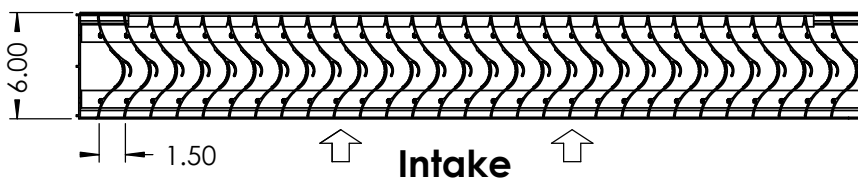
**Note: VB6 Louvers are built 1/2" undersized in both directions unless ordered "ACTUAL SIZE".**



MOUNTING METHOD #1  
USING WEDGE ANCHORS  
AND ANGLE CLIPS



MOUNTING METHOD #2  
USING WALL CAPS  
(NO DRILLING OF WALL)



# LEADER

Dampers & Louvers

P.O. Box 40913  
Nashville, TN 37204  
www.leaderindustries.com  
A Division of Leader Industries, Inc.



Free Area Selection Chart for VB6																				
		Width(in.)																		
		12	18	24	30	36	42	48	54	60	66	72	78	84	90	96	102	108	114	120
Height(in.)	12	0.15	0.28	0.42	0.55	0.69	0.82	0.96	1.09	1.23	1.36	1.49	1.63	1.76	1.90	2.03	2.17	2.30	2.44	2.57
	18	0.31	0.60	0.88	1.16	1.44	1.72	2.00	2.28	2.56	2.84	3.13	3.41	3.69	3.97	4.25	4.53	4.81	5.09	5.37
	24	0.48	0.91	1.33	1.76	2.19	2.62	3.05	3.47	3.90	4.33	4.76	5.18	5.61	6.04	6.47	6.90	7.32	7.75	8.18
	30	0.64	1.22	1.79	2.37	2.94	3.52	4.09	4.66	5.24	5.81	6.39	6.96	7.54	8.11	8.69	9.26	9.83	10.41	10.98
	36	0.81	1.53	2.25	2.97	3.69	4.41	5.13	5.85	6.58	7.30	8.02	8.74	9.46	10.18	10.90	11.62	12.34	13.07	13.79
	42	0.97	1.84	2.71	3.57	4.44	5.31	6.18	7.05	7.91	8.78	9.65	10.52	11.38	12.25	13.12	13.99	14.86	15.72	16.59
	48	1.14	2.15	3.16	4.18	5.19	6.21	7.22	8.24	9.25	10.27	11.28	12.29	13.31	14.32	15.34	16.35	17.37	18.38	19.40
	54	1.30	2.46	3.62	4.78	5.94	7.11	8.27	9.43	10.59	11.75	12.91	14.07	15.23	16.39	17.56	18.72	19.88	21.04	22.20
	60	1.46	2.77	4.08	5.39	6.69	8.00	9.31	10.62	11.93	13.23	14.54	15.85	17.16	18.46	19.77	21.08	22.39	23.70	25.00
	66	1.63	3.08	4.54	5.99	7.45	8.90	10.35	11.81	13.26	14.72	16.17	17.63	19.08	20.54	21.99	23.44	24.90	26.35	27.81
	72	1.79	3.39	4.99	6.60	8.20	9.80	11.40	13.00	14.60	16.20	17.80	19.40	21.01	22.61	24.21	25.81	27.41	29.01	30.61
	78	1.96	3.70	5.45	7.20	8.95	10.70	12.44	14.19	15.94	17.69	19.43	21.18	22.93	24.68	26.43	28.17	29.92	31.67	33.42
	84	2.12	4.01	5.91	7.80	9.70	11.59	13.49	15.38	17.28	19.17	21.06	22.96	24.85	26.75	28.64	30.54	32.43	34.33	36.22
	90	2.28	4.33	6.37	8.41	10.45	12.49	14.53	16.57	18.61	20.65	22.70	24.74	26.78	28.82	30.86	32.90	34.94	36.98	39.02
	96	2.45	4.64	6.82	9.01	11.20	13.39	15.58	17.76	19.95	22.14	24.33	26.51	28.70	30.89	33.08	35.27	37.45	39.64	41.83
	102	2.61	4.95	7.28	9.62	11.95	14.29	16.62	18.95	21.29	23.62	25.96	28.29	30.63	32.96	35.30	37.63	39.96	42.30	44.63
	108	2.78	5.26	7.74	10.22	12.70	15.18	17.66	20.14	22.63	25.11	27.59	30.07	32.55	35.03	37.51	39.99	42.47	44.96	47.44
	114	2.94	5.57	8.20	10.82	13.45	16.08	18.71	21.34	23.96	26.59	29.22	31.85	34.47	37.10	39.73	42.36	44.99	47.61	50.24
	120	3.11	5.88	8.65	11.43	14.20	16.98	19.75	22.53	25.30	28.08	30.85	33.62	36.40	39.17	41.95	44.72	47.50	50.27	53.05

## Wind Driven Rain Performance

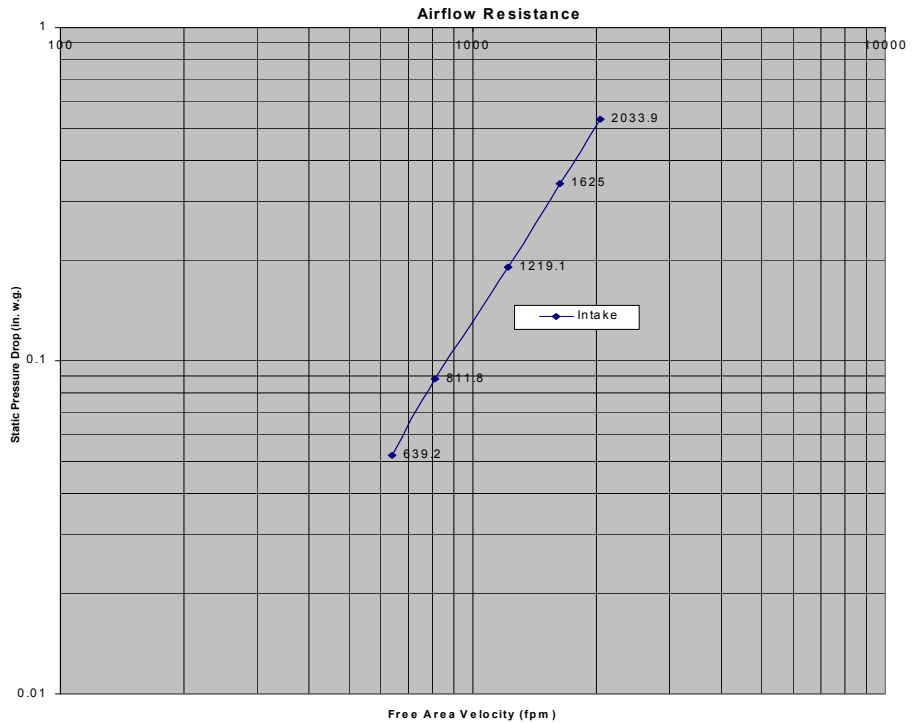
Wind Velocity mph (kph)	Rain Fall Rate in/hr (mm/hr)	Core Velocity fpm (m/s)	Airflow cfm (m <sup>3</sup> /min)	Free Area Velocity fpm (m/sec)	Effectiveness Ratio	Class	Discharge Loss Class for Intake	
29 (46.4)	3 (76)	673 (3.41)	7243 (205)	1584 (8.1)	100%	A	2	
50 (80.5)	8 (203)	678 (3.44)	7300 (207)	1597 (8.1)	100%	A	2	
Wind Driven Rain Penetration Classes:				Discharge Loss Class Rankings				
Classes	A	B	C	D	1	2	3	4
Effectiveness	1 to .99	.989 to .95	.949 to .80	Below .80	.4 and above	.3 to .399	.2 to .299	.199 and below

\*The AMCA 500-L Wind Driven Rain test were performed with a louver core test size of 39.38" x 39.38". The Free Area of the louver tested is 4.572 sq. ft.

The performance shown is done at standard air density, 0.075lbs./ft. The pressure drop data applies to the intake side of the test unit that was 48" x 48" only.



Leader Industries Inc. certifies that the Model VB6 - Vertical Blade Louver shown herein is licensed to bear the AMCA Seal. The ratings shown are based on tests and procedures performed in accordance with AMCA Publication 511 and comply with the requirements of the AMCA Certified Ratings Program. The AMCA Certified Ratings Seal applies to Wind-Driven Rain ratings and Air Performance ratings.



# LEADER

Dampers & Louvers

P.O. Box 40913  
Nashville, TN 37204  
www.leaderindustries.com  
A Division of Leader Industries, Inc.